

ELON MUSK'S TAKEOVER OF TWITTER

Reporter: Noah Humphrey

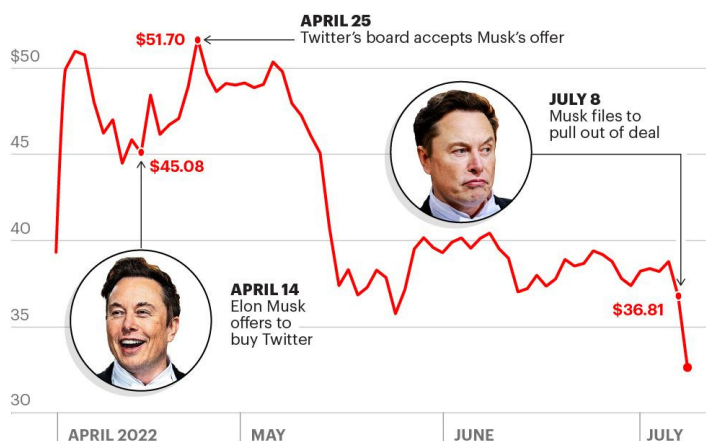


Photo illustration by Slate. Photos by Patrick Pleul/Pool/AFP via Getty Images and Twitter.

On Friday, October 28, Elon Musk finally added Twitter to his portfolio of investments. Twitter's board of directors met with Elon Musk in April to discuss his offer. The two sides soon reached a deal, with the company agreeing to sell itself for \$54.20 a share. In total, the company was sold to Musk for \$44 billion. The deal came to fruition on the 28th of October which is around 6 months apart. On the same day of the acquisition of Twitter, Musk fired top executives such as the CEO, CFO, Chief Legal Affairs Officer, and the President of the Board of Directors. The current state of the social media market is definitely shaky.

Meta, otherwise known as Facebook/Instagram, is down over 70% this year alone. Similarly, Snapchat is down close to 80%. Elon Musk is a controversial figure, causing business leaders to have varied opinions and ways of approaching the new owner and CEO of Twitter. Companies such as General Motors have already suspended advertising with Twitter. GM issued the statement and said they are, "engaging with Twitter to understand the direction of the platform under their new ownership." Musk's larger personality could end up hurting him and Twitter. It will be interesting to see what happens to Twitter and Elon Musk under his polarizing leadership strategies.

TWITTER'S SHARE PRICE DURING MUSK ACQUISITION



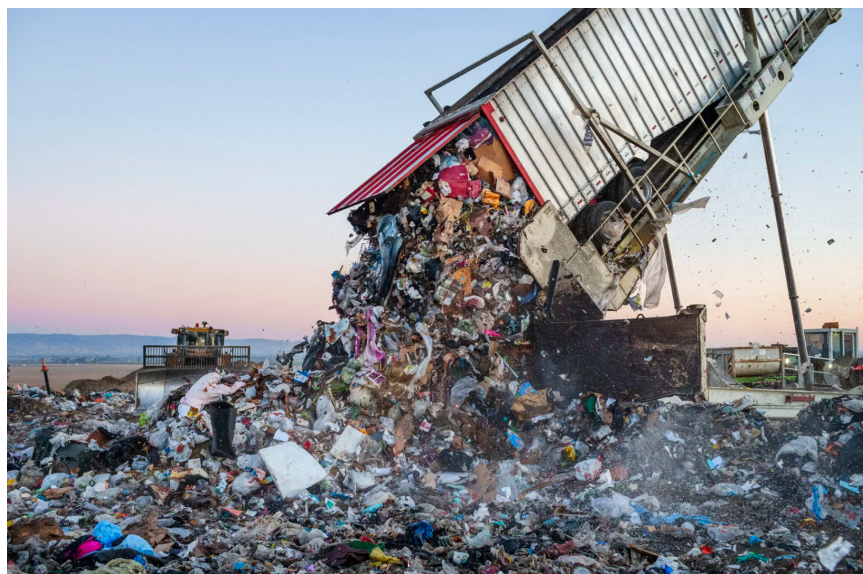
THE PROBLEM OF FOOD WASTE

Reporter: *Terry Langetieg*

Photo right: *A Vacaville, Calif., landfill.*
Andri Tambunan for The New York Times

Food waste is something that almost all of us have contributed to. One of

the most obvious places that we can think of it is the Dining Hall. Every meal there is a huge pile of food that is sent to the trash can. The truth is food waste has a huge impact on the world. According to the UN Environment Programme, “Estimates suggest that 8-10% of global greenhouse gas emissions are associated with food that is not consumed.” This has nearly the same effect as the fossil fuels used to heat businesses and homes and around a third of the effect transportation vehicles have. The United States Environmental Protection Agency suggests that agriculture accounts for about 11% of the total greenhouse emissions. The amount of that number that is food waste is enormous. Though the impact of food waste is a pretty novel realization it is one that we can all work to prevent, so when you go up to get your food please make sure to get a portion that you can finish.



ENVIRONMENTAL DOOMSDAY CLOCK

Reporter: *Ryan Sung*

The Environmental Doomsday Clock is a trend among people who care and recognize the severity of environmental pollution. It is a symbolic clock face that shows each country's graveness of its environment by pointing to a certain time. The bigger the number, the more crucial the crisis is for the country. When the clock hits 12 o'clock, that country will most likely meet its environmental doom. Shockingly, the current Environmental Doomsday Clock "time" for the U.S. is 10:03. To make it more comprehensible, the U.S. has approximately 7-8 years to repair the country's environmental damages.

The consequences of our pollutive actions seem pretty far away. Nevertheless, it is shockingly near us and should never be understated. So, why don't we care about our environment and take a little step towards it? Even picking up nearby trash might make a huge difference in preserving our environment.



Industrial chimneys with smoke causing air pollution.
By Vlad Chetan, from United Nations un.org